

User Manual

PENTAGRAM USB VoIP Phone (P 1411, P 1412)



For the latest versions of manuals, drivers and software, visit www.pentagram.eu.

2008-04-16

NOTE: All information and technical specifications provided in this manual are subject to change without notice and/or indication.

© **2007 PENTAGRAM**

All rights reserved. Unauthorized duplication and copying prohibited.

INDEX

INTRODUCTION	5
FEATURES	5
PACKAGE CONTENTS	5
REQUIREMENTS	5
OVERVIEW	6
INSTALLATION	8
USB PHONE CONFIGURATION	10
SYSTEM TRAY ICON	10
AUDIO SETTINGS TAB	11
PHONE SETTINGS TAB	12
FUNCTION KEY TAB	12
LANGUAGE TAB	13
RINGER SETTINGS TAB	13
INFORMATION TAB	14
USING USB PHONE	15
USB PHONE TEST	15
TROUBLESHOOTING	16





Introduction

PENTAGRAM USB Phone (P 1411, P 1412) is a high quality USB hand phone with 8-polyphonic ring tones. Its fashionable appearance, easy-to-use design and euphonious melody will set you apart from others. Just plug it into your PC or laptop, and then you can enjoy the full features of Skype™.

Features

- Classical 8-polyphonic ring tones catering to different tastes.
- Rings loudly on an incoming call.
- Fully functional keypad enables you to make/receive calls even easier.
- Power LED
- Supplied hands-free operation.
- Acoustically isolated earpiece and microphone to eliminate echo.
- Full-duplex communication with crystal clear sound.
- USB interface PnP. No external power/sound card needed.
- System audio output and USB phone audio output is disjoint

Package contents

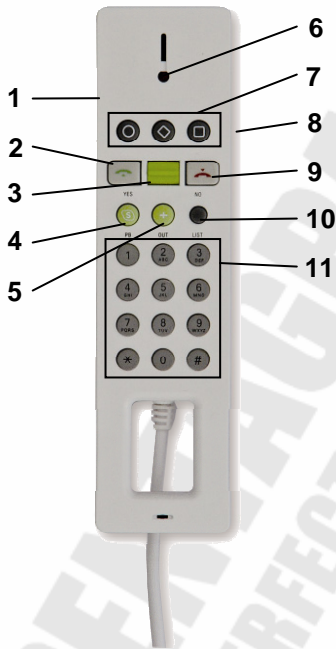
1. PENTAGRAM USB Phone (P 1411 or P 1412)
2. CD with drivers, software and manuals
3. Quick installation guide

If any of the package contents are missing, please contact your vendor.

Requirements

- Pentium 400MHz or above processor / 128MB RAM / 16MB free hard disk capacity
- Available USB port
- Windows 2000 or XP operating system
- CD-ROM drive
- Internet connection (ADSL, Cable Modem, Dial Up, Wireless LAN)

Overview



1. **Volume Control** – This set of button is designed for volume level adjustment. The top button is for volume up; the bottom button is for volume down.
2. **Accept/Dial:**
 - When you receive a call, press this button to answer the call.
 - When you have selected your contact or input the desired phone number, press this button, to place your call.
3. **Buddy Seesaw:**
 - Flip it up and down to toggle through your contacts in Skype contact list.
 - In other tab menus, you can flip it to toggle through the selections.
4. **Skype:**
 - Press this button to make Skype window active.
 - Press this button again to toggle through the tab pages (Contacts, Dial, Call List) of Skype.
5. **+ button (SkypeOut button)** – Use this button to dial to telephone or cellular phone. Press + button, then enter country code, area code, and phone number. (Require SkypeOut credits)
6. **Status LED mode** – When phone is connected to your computer, the LED will be lit during standby;
7. **Function Keys** – There are three function keys, which is preset for **Change Status, Contacts List, and Ringer**. You may customize the three function keys to your desired functions, such as **Change Status, Contacts List, Redial, Start Chat, Ringer** or **Hold**. You must open USB Phone Console to customize the three buttons.

8. **Mute** – Press this button during a conversation to disable the microphone temporarily so the person on the other end cannot listen in. Press the button again to enable the microphone and back to the conversation mode.
9. **End/Cancel:**
 - After your conversation is over, press this button to end the call.
 - When you dial the wrong number, press this button to clear the number.
 - Press and hold this button for approximately 2 seconds to hide Skype window.
10. **LIST button** – Press **LIST** button, then a Skype Contacts window will appear. You may use the alphabets on your numeric buttons to do a quick search of your contacts in alphabetical order.
11. **Numeric Keypad:**
 - Use the keypad to dial your destination numbers.
 - Press **LIST**, then use the alphabets on the keypad to search for your contact.



PENTAGRAM
THE PERFECT SIMPLICITY

Installation

Note: Do not connect the USB Phone to your PC before installing drivers!

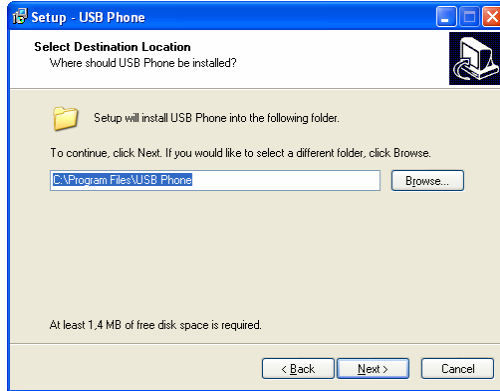
1. Insert the supplied CD into your CD-ROM drive. The setup wizard should launch automatically. Under Windows Vista, you may also need to click **Run PENTAGRAM.EXE** when the AutoPlay dialog box appears. If the program does not start automatically, click **Start** and then select **Run** (In Windows Vista: **Start > All Programs > Applications > Run**). In the box that appears, type `X:\PENTAGRAM.exe` (where `X` is the letter assigned to your CD-ROM drive).
2. Select **installation** to run the installer.



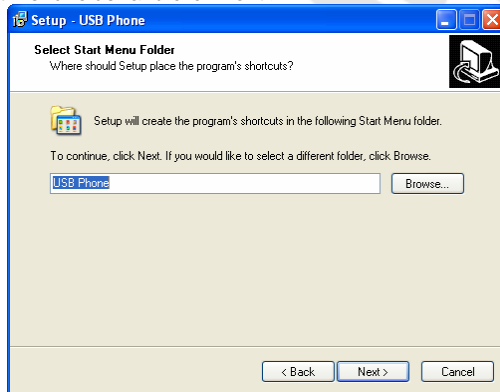
3. Click **Next >** to begin installation.



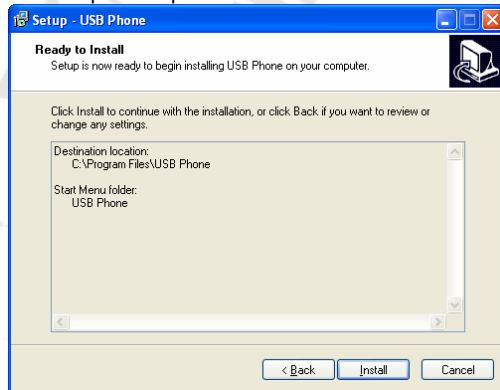
4. Select the installation folder and click **Next >**.



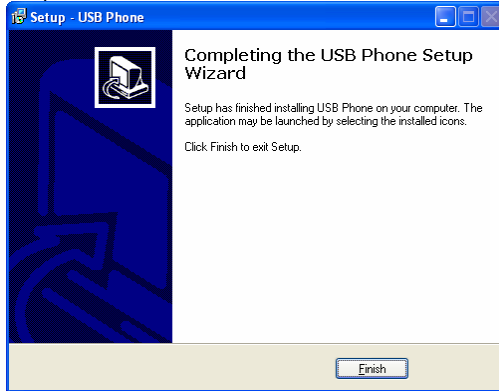
5. Select the Start Menu folder and click **Next >**.



6. To begin the installation process press **Install** button.



7. Click **Finish** to complete installation.






8. Connect USB Phone to PC.

USB Phone Configuration

System Tray Icon

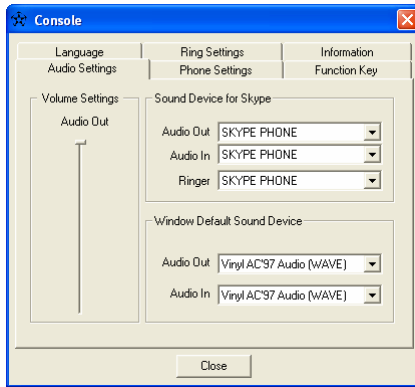
A configuration application (Console) is installed with phone drivers. The application's icon is displayed in the system tray (next to the clock), and its appearance depends on USB Phone and Skype application status.

		
(red circle) The USB Phone is not connected to the PC.	(yellow circle) Skype is not running.	The USB Phone is connected to the PC and Skype is Running.

To launch the Phone configuration application (Console), double-click the applications icon. Application features are organized into tabs: **Audio Settings**, **Phone Settings**, **Function Key**, **Language**, **Ring Settings** and **Information**.

Audio Settings tab

This tab allows you to set up I/O Audio devices for Windows and Skype.



Volume Settings

Audio Out – Select volume of the phone speaker.

Sound Device for Skype

Audio Out – Select device, which will be used in Skype as a speaker.

Audio In – Select device, which will be used in Skype as a microphone.

Ringer – Select device, which will be used in Skype as a ringer speaker.

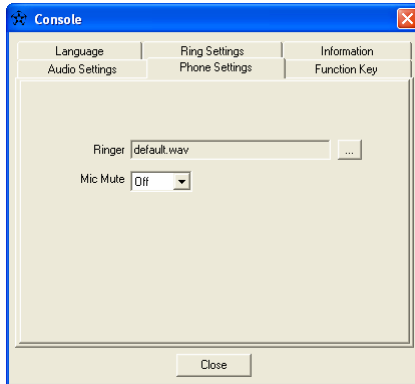
Windows Default Sound Device

Audio Out – Select device, which will be used in Windows as a speaker.

Audio In – Select device, which will be used in Windows as a microphone.

Note: *It is recommended to select USB Phone only as Sound Device for Skype and your main soundcard as Windows Default Sound Device – this will allow you to play sounds from applications other than Skype on your speaker set (or headphones).*

Phone Settings tab

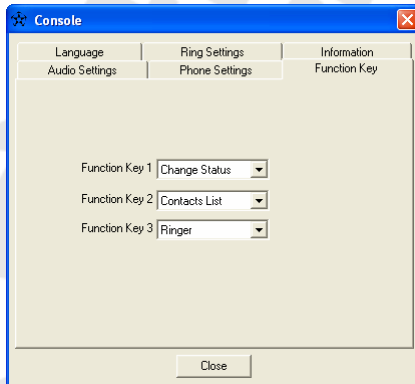


Ringer – Select audio file, which will be used as a ringer (only if your soundcard is selected as the audio device for **Ringer** in **Audio Settings** tab)

Mic Mute – Enables (**On**) or disables (**Off**) microphone muting.

Function Key tab

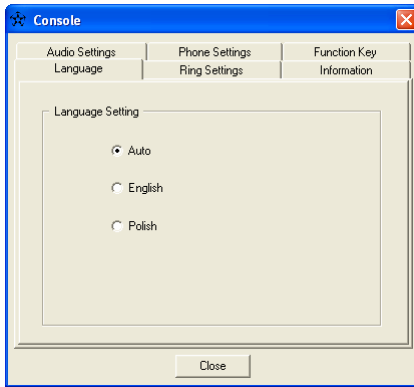
This tab allows you to set up Function Keys.



You can assign to each button one of following function: **Change Status**, **Contacts List**, **Redial**, **Start Chat**, **Ringer** and **Hold**.

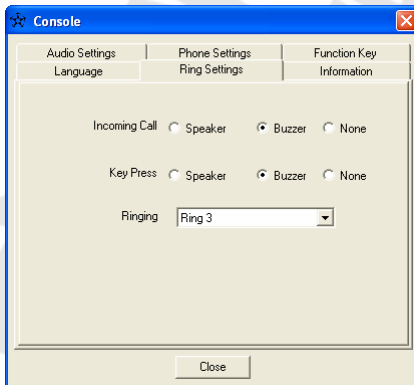
Language tab

Select language you wish to use in Console.



Ringer Settings tab

This tab allows you to set up ringer and key press sounds.



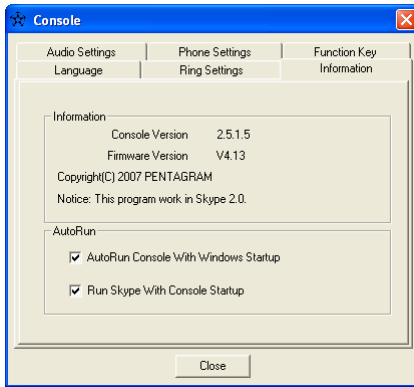
Incoming Call – Select whether ringer will be audible in **Speaker**, **Buzzer** or **None**.

Key Press – Select whether key press sounds will be audible in **Speaker**, **Buzzer** or **None**.

Ringing – Select ringer you wish to use.

Information tab

On this tab you will find all information about Phone and Console.



Information

Console Version – Version of Console application.

Firmware Version – Version of firmware software.

AutoRun

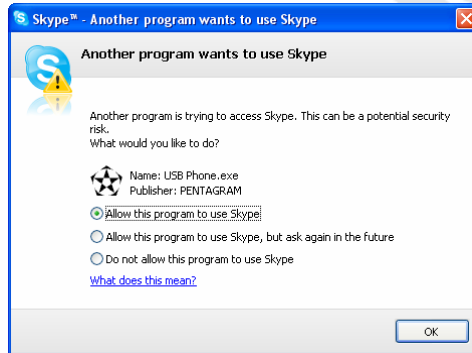
AutoRun Console With Windows Startup – Select this option if you want to automatically start Console application each time Windows starts.

Run Skype With Console Startup – Select this option if you want to automatically start Skype together with Console application.

Using USB Phone

PENTAGRAM USB Phone is designed especially for Skype application. However it can be used with any Instant Messaging application that supports voice. Just set (in applications configuration) USB Phone (SKYPE PHONE) as device for Audio In (Microphone) and Audio Out (Speakers/Headphones).

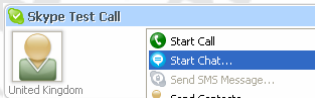
During first run of Skype after driver installation following window will appear. Select **Allow this program to use Skype** and click **OK**.



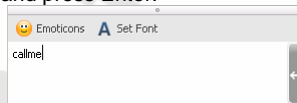
USB Phone Test

To test your USB phone:

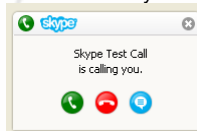
1. Run Skype.
2. Right click on **Skype Test Call** contact and select from menu **Start Chat...**



3. In chat window type **callme** and press Enter.



4. Wait for a moment and **Skype Test Call** will call you soon.



5. If the USB Phone has been correctly connected to the PC, you will hear the melody ring tone. You can receive this call by pressing **Dial/Answer**.

Troubleshooting

What shall I do when the other party cannot hear me when I call him/her with USB phone?

- Please go to USB Phone Console and ensure **Audio In** is set to **SKYPE PHONE** under **Sound Device for Skype** in **Audio Settings** tab.
- Ensure the **Mic Mute** box (**Phone Settings** tab) is not checked.

No sound can be delivered through external speakers after I plug in USB Phone to the computer.

- Please open USB Phone Console, select **Sound Devices** tab. Under **Windows Default Sound Device**, set your computer sound card as **Audio Out**.

No sound comes out of the handset but only the speakers after I plug USB Phone into the computer.

- Please go to **Audio Settings** tab in USB Phone Console. Then ensure **Audio Out** is set to SKYPE PHONE under **Sound Device for Skype**.

How to change the ring tone to silent for incoming calls?

- Please go to **Ring Settings** tab in USB Phone Console. Then select **None** for **Incoming Call**.

How do I mute USB Phone key tone?

- Please go to **Ring Settings** tab in USB Phone Console. Then select **None** for **Key Press**.

How to customize the Function Keys?

- Please use the drop-down menus on **Function Keys** tab to select the functions for each of the three function keys.

How do I use function keys to redial?

- Please go to **Function Keys** tab in USB Phone Console. Select any of the three Keys, for instance, **Function Key 1**, and from list select **Redial**. Once this is set, you will only need to press **Function Key 1** for redialing the previous phone number thereafter.

How to use function keys to place a call on hold?

- Please go to **Function Keys** tab in USB Phone Console. Select any of the three Keys, for instance, **Function Key 2**, and from list select **Hold**. Once this is set, you will only need to press **Function Key 2** for putting a call on hold.

How to use function keys to directly change the online status at Skype?

- Please go to **Function Keys** tab in USB Phone Console. Select any of the three Keys, for instance, **Function Key 3**, and from list select **Change Status**. Once this is set, you will only need to press **Function Key 3** for changing online status at Skype.