



## Instruction Manual

VANQUISH  
R POCKET




*The latest versions of manual, drivers and applications are available  
at [www.pentagram.eu](http://www.pentagram.eu)*

2007-10-26

# INDEX

INTRODUCTION .....	3
BEFORE USE.....	4
USAGE .....	5
NAVIGATION.....	6
CONNECTING TO COMPUTER.....	13
TROUBLESHOOTING .....	17
SPECIFICATION .....	18



**NOTE!** Any information and technical data are subject to change without prior notification and/or indication in this manual.

**Copyright © 2007 PENTAGRAM**

All rights reserved; copying and reproduction is strictly forbidden.

---

## ***Introduction***

Thank you for purchasing PENTAGRAM Vanquish R Pocket. This player perfectly combines digital audio playing (MP3, OGG, WMA, WAV and ASF), voice recording, FM radio, FM recording and USB mass storage (pendrive).

## ***System Requirements***

- IBM PC, notebook or Mac with available USB port;
- Operating system: Windows 98 / 98SE / Me / 2000 / XP / Vista, MacOS 10 or higher, Linux 2.4.2 or higher.

## ***Box Contents***

- PENTAGRAM Vanquish R Pocket (P 5114)
- Earphones
- USB cable
- CD with applications
- Instruction Manual
- Neckstrap
- Power adapter



## ***Before use***

### ***Safety precautions***

- Please avoid placing player directly in the sunlight or dusty, humid place or place with extremely low or high temperatures (i.e. car with closed windows in summer);
- Please avoid dropping or impact upon player;
- Don't let liquid or objects into player;
- Don't use chemicals, such as gasoline or other diluents, upon player's surface;
- Clean player only with soft cloth;
- Before cleaning, disconnect player from computer or other power source;
- Please do not disassemble any part of the unit, any unauthorized disassembling will cause termination of PENTAGRAM official warranty;
- Please don't use wet hand to plug/unplug or contact player for preventing shock or damage;
- Please don't unplug player while data is transferring with the computer, otherwise the data may be lost;
- Please don't judder, otherwise player may be damaged;
- Files or data stored in player cannot completely avoid being destroyed or lost due to improper use or other reasons. Please backup files and data when necessary;

### ***Battery charging***

When you start using the unit, please fully charge and discharge the battery 2 - 3 times to ensure maximum battery life and power capacity.

- indicates that battery is full.

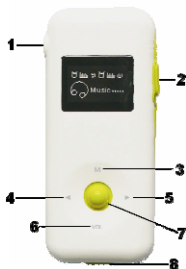
- indicates that battery is empty.

To charge battery:

- connect player to computer's USB port;
- connect player to power outlet via attached power adapter;
- connect player to car lighter socket via car USB charger (not included).

## Usage

### Player's appearance



1. Earphone Mini-Jack 3,5mm
2. Power Switch
3. **M** (Mode) Button
4. ◀ Button
5. ▶ Button
6. **VOL** Button
7. **PLAY** Button
8. Mini USB connector

### Turning the player on

To turn the player on, you must move the power switch to **ON** position and, if display is not lit, hold **PLAY** button for 3 seconds.

To turn the player off either hold **PLAY** button for 3 seconds or move the power switch to **OFF** position.

### Buttons

All buttons have their main functions available at all times and functions which depend on current selected mode.

### General

Power switch – power on/off the player

**PLAY** – hold for 3s – turn on/off the player

**M** – hold for 3s – return to main menu.

## Main Menu:

◀ and ▶ – select main menu options.

M – confirm selection.

## Submenu / file list

◀ and ▶ – select submenu/list option.

M – confirm selection.

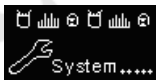
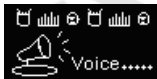
PLAY – return to previous menu.

## Volume

In **Music**, **Voice** or **FM** mode, press **VOL** button to enter volume control panel and then press ▶ to increase or ◀ to decrease the volume.

## Navigation

### Main Menu



Use ◀ and ▶ buttons to navigate through the main menu and press M to confirm selection. You can return to Main menu anytime by holding M button for 2-3 seconds.

## Music Mode



In this mode you can listen to your music files (MP3, OGG, WMA and ASF). WAV files can be played in Voice mode. Buttons functions in this mode are:

**PLAY** – play / pause current audio file.

◀ / ▶ – previous / next audio file.

**VOL** – volume control panel.

**M** – pause menu / play menu.

## Pause Menu

You can access the pause menu by pressing **M** button when the music file is stopped / paused. In this submenu the options are:

- **Local Folder** – audio files list.
- **Del File** – delete current file (use ◀ and ▶ buttons to select **Yes** and press **M** to confirm deletion)
- **Del All** – delete all audio files (MP3, OGG, WMA and ASF) from player's memory (use ◀ and ▶ buttons to select **Yes** and press **M** to confirm deletion)
- **Exit** – return to **Music** mode.

## Play Menu


You can access the play menu by pressing **M** button when a music file is being played. In this submenu the options are:

- **Play mode** – select play mode:
  - Normal – plays all files once.
  - Repeat One – repeats selected file continuously.
  - Folder – plays files in current folder once.
  - Repeat Folder – repeats files in current folder continuously.
  - Repeat All – repeats all files continuously.
  - Random – plays all files in random order.
  - Intro – plays first 10 seconds of each music file.
- **Equalizer** – select Equalizer preset:
  - Natural, Rock, Pop, Classical, Soft, Jazz, DBB.

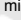
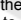
- **Tempo Rate** – use ► / ◀ to increase / decrease playback speed (MP3 file format only).
- **Replay** – enter A-B Replay mode (see below).
- **Replay Times** – select number of times to play file fragment in **Replay** mode.
- **Replay gap** – break period between each replay of selected in **Replay** mode file fragment.
- **Exit** – return to **Music** mode.

## A-B Replay

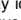
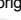
A-B Replay mode is available in **Music** and **Voice** mode – the player will repeat the fragment of music file selected by the user. To exit this mode and its sub-modes press **M** button.

- Select **Replay** option in Play Menu to activate A-B Replay mode.
- Replay Mode icon  now appears on the display and a letter **A** is flashing. Press ► to set starting point **A**.
- Letter **A** in Replay Mode icon is flashing. Press ► to set the ending point **B**.
- Selected A-B fragment will be repeated 1-10 times (this value can be set in **Replay Times** option in Play Menu). During replaying press ◀ to select a new starting point **A** (and new segment).

### A-B Record™ (only in Music Mode)

During replaying A-B segment press ► to enter A-B Record. The Repeat icon changes to  and microphone is used to record user's voice. The recording time is as long as A-B segment. After the recording time, the icon changes to  and the original fragment is being played. Push ◀ to return to A-B Replay or ► to enter Comparison.

### A-B Comparison™ (only in Music Mode)

In Comparison A-B Replay icon is changed to  and the file recorded by the user is being played. After playing the recorded file, the icon changes to , and the original A-B segment is being played. Press ◀ to return to A-B Record.

## Lyrics display

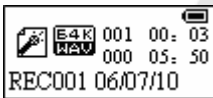
Vanquish R Pocket supports lyrics files (\*.lrc), which are displayed synchronously while playing music. In order to be used, lyrics file must be named same as the corresponding music file, i.e.: "sample.mp3" and "sample.lrc". If the current song has a matching lyrics file, the lyrics icon (shown below) will be displayed at the left side of the display.



To display the lyrics, long press **M** while the music is being played. To exit lyrics mode press **M**.

**Caution:** If the lyrics icon is not displayed, the lyrics file name does not match the music file name or this file name is too long.

## Record Mode



This mode can be used to record sound from a built-in microphone (select **Record** option from main menu) or FM mode (select **Record** option from **FM** mode submenu). Buttons functions in this mode are:

**PLAY** – start / pause recording.

**M** – **Record** mode submenu (not during recording or pause), hold to save file and return to the main menu or **FM** mode.

## Submenu

- **Local folder** – select folder where recorded file will be saved and stored.
- **REC type** – select quality of recording: **Fine REC** (high quality, large file, WAV format) or **Long REC** (low quality, small file, ACT format; not available when recording from radio)
- **Exit** – return to **Record** mode.

## Messages

- **Overflow** – the player's flash memory is full. Please delete some files to make some space available.
- **Over record** – there are 99 recorded files in current directory. Please switch to another directory.

## Voice Mode



In this mode you can listen to the files recorded in **Record** mode (WAV, ACT) and play music files in WAV format. Buttons functions in this mode are:

- PLAY** – play / pause current file.
- ◀ / ▶** – previous / next audio file.
- VOL** – volume control panel.
- M** – pause menu / play menu.

## Pause Menu

You can access the pause menu by pressing **M** button when the music file is stopped / paused. In this submenu the options are:

- **Local Folder** – audio file list.
- **Del File** – delete current file (use **◀** and **▶** buttons to select **Yes** and press **M** to confirm deletion)
- **Del All** – delete all recorded audio files (WAV, ACT) from player's memory (use **◀** and **▶** buttons to select **Yes** and press **M** to confirm deletion)
- **Exit** – return to **Music** mode.

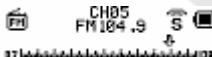
## Play Menu

You can access the play menu by pressing **M** button when the music file is being played. In this submenu the options are:

- **Play mode** – select play mode:
  - Normal – plays all files once.
  - Repeat One – repeats selected file continuously.
  - Folder – plays files in current folder once.
  - Repeat Folder – repeats files in current folder continuously.
  - Repeat All – repeats all files continuously.
  - Random – plays all files in random order.
  - Intro – plays first 10 seconds of each file.

- **Tempo Rate** – use ► / ◀ to increase / decrease playback speed (not all file formats).
- **Replay** – enter A-B Replay mode (refer to **A-B Replay** part of **Music Mode** section for details)
- **Exit** – return to **Music** mode.

## FM Mode



This mode is a FM tuner. In this mode the carphones are used as antenna and they should be connected before station searching. Buttons functions in this mode are:

**PLAY** – select the next saved radio station.

**M** – FM mode submenu.

◀ / ▶ – change frequency by 0,1MHz, hold to scan for nearest station.

## Submenu

- **Save** – save the current radio station.
- **Record** – record from FM radio. Please refer to **Record Mode** section for more details.
- **Delete** – delete the selected saved radio station.
- **Delete All** - delete all saved radio stations.
- **Auto Search** – automatically scans the band and saves all stations. The found station will be saved after 2-3 seconds, but you can use ◀ and ▶ buttons to skip the stations you don't want to save or to select the scanning direction (i.e. to save the stations in specific order). Press **M** to end Auto Search.
- **Normal Band** – radio will use European frequency band (87~108MHz).
- **Japan Band** – radio will use Japanese frequency band (76~90MHz).
- **Exit** – return to **FM** mode.

## **System Menu**

System Menu is used to configure various player functions.

**Record Time** – set the time and date (YYYY-MM-DD format) the recorded files are saved under. Use **VOL** button to select fields and ◀ / ▶ buttons to change the values. Turning the player off will cause these settings to be reset to default.

**Backlight** – select idle time after which backlight will be turned off.

**Language** – select menu language.

**Power Off** – select idle time after which player will enter energy saving mode (**Sleep time**) and will be turned off (**Off time**).

**Replay Mode** – set working states in **Replay mode**.

**Contrast** – select contrast of the display.

**Online Mode** – select which player partition will be visible after connecting to computer – **Multi Drive** (both partitions), **Normal only** or **Encrypted only**.

**Memory** – displays free memory space.

**Version** – displays date and version of player's firmware.

**Firmware upgrade** – See **Firmware Upgrade** section.

**Exit** – return to main menu.



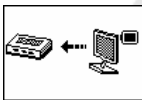
## Connecting to computer

In Windows Me/2000/XP/Vista, Mac OS 10.3, Red Hat Linux 8.0 or newer, the player is seen as removable disc connected to USB port. When connected to computer, the player is being powered from USB port. Press **M** if you want to use the player.

When the player is connected to computer, the LCD is displaying its current activity:



Standby



File download



File upload

## Private Space function

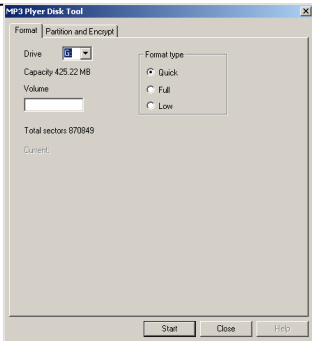
Private Space function can be used to divide player's memory into 2 partitions in any proportions. One of them can be encrypted and protected with password. Data stored on this partition will be safe from unauthorized access.

**Note:** Dividing or merging player's partitions will delete all data stored on these partitions. Backup your data before dividing/merging.

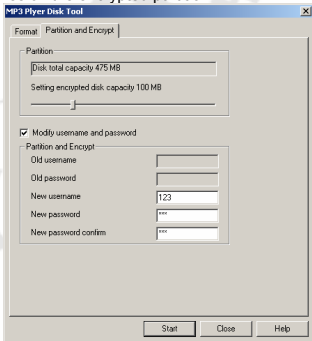
To use Private Space function follow these steps:

1. Connect Vanquish R Pocket player to your computer.
2. Install and run „MP3 player Disk Tool” (you can find it on attached CD).

## Vanquish R Pocket (P 5114)

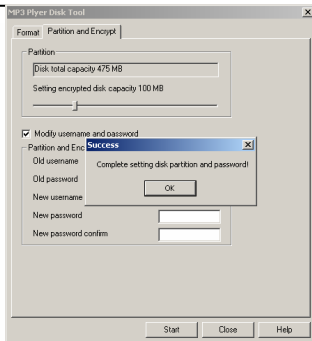


3. Select tab „Partition and encrypt“.
4. Use slider to set encrypted partition size.
5. Type in the user name and password which will be required to access files on the encrypted partition.



6. When finished, click „Start“ button to begin encrypting.
7. When the operation is complete your computer may be restarted.

## Vanquish R Pocket (P 5114)



8. After restarting, you will see additional disc – this is the encrypted partition you have just created.
9. You will gain access to the data stored on this partition when you run „RdiskDecrypt” application and correctly type user name and password.



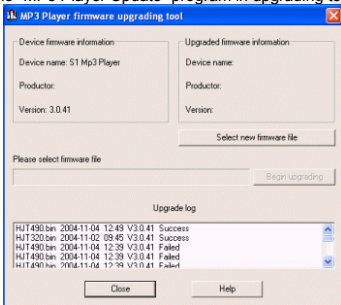
## Firmware Upgrade

### NOTE:

Firmware upgrade improves and optimizes the performance of the player. The normal work of the player would not be affected even if the firmware isn't upgraded. The wrong operation of upgrading firmware would cause the device not to work normally! The firmware upgrade software of this player does not apply to other series of players.

Follow these steps to upgrade player's firmware:

1. In the main menu select **System** and then **Firmware upgrade**.
2. Connect the player to PC
3. Run the "MP3 Player Update" program in upgrading tools on PC.



4. Click "Select new firmware file" button. the UI is as follows:
5. Choose new firmware file (You can download it from our website).
6. Click **Start** button, the system starts upgrading.
7. If upgrading successfully, LCD will display the following screen:



## Troubleshooting

If you experience any of the following difficulties in using player, use the following guide for help. Should any problem persist, please visit [www.pentagram.eu](http://www.pentagram.eu) site and eventually contact PENTAGRAM Customer Service.

Symptoms	Possible cause	Solution
Fails to turn on	Low battery	Charge battery
Turns off shortly after switched on		
No sound	The volume set at 0	Turn up the volume
	Earphones not connected properly	Connect the earphones correctly
Buttons doesn't work	The player is stuck	Use Power switch to turn off and turn on the player
Fail to connect with the computer	USB Cable isn't connected correctly	Connect USB Cable correctly
Fail to copy files	Not enough free space	Delete some files
	System doesn't meet the requirements	Upgrade your system to meet requirements
	Flash memory error	Format player's memory and try again
Can't record	Low battery	Charge battery
	Insufficient space	Delete some files

## Specification

Function	Description	
Dimensions	29 x 68 x 9 mm (W x H x D)	
Weight	20g	
Display	Mono LCD, 96x48	
Capacity	1GB ~ 2GB	
Power supply	Built-in battery, charged via USB port	
Working time	~9h	
Radio FM	Frequency: China, Europe, U.S.A	87MHz – 108MHz
	Japan	76MHz – 90MHz
	Preset stations	20
Supported files	Music	MP3, OGG, WMA, ASF, WAV
	Voice	WAV, ACT
Power output	10mW in left and right	
SNR	85dB	
Working temperature	5°C~40°C	
Supported languages	Chinese (Traditional), Chinese (Simplified), English, Japanese, Korean, German, French, Italian, Spanish, Swedish, Czech, Dutch, Portuguese, Denmark, Polish, Russian, Thai, Greece, Turkish, Hebrew	
Data transfer	PC computer, notebook or Mac with USB port	
Operating system	Windows Me/2000/XP/Server2003/Vista, MacOS 10, Linux 2.4.2.	

\* specification may be changed without prior notice

**NOTES**



**NOTES**

